

Public Document Pack



NOTICE OF MEETING

Meeting	Executive Member for Education and Skills Decision Day
Date and Time	Wednesday, 10th July, 2019 at 2.00 pm
Place	Chute Room - HCC
Enquiries to	members.services@hants.gov.uk

John Coughlan CBE
Chief Executive
The Castle, Winchester SO23 8UJ

FILMING AND BROADCAST NOTIFICATION

This meeting may be recorded and broadcast live on the County Council's website. The meeting may also be recorded and broadcast by the press and members of the public – please see the Filming Protocol available on the County Council's website.

AGENDA

KEY DECISIONS

1. AUSTEN ACADEMY, BASINGSTOKE (Pages 3 - 18)

To consider a report of the Director of Culture, Communities and Business Services regarding Austen Academy, Basingstoke.

2. ST FRANCIS SPECIAL SCHOOL, FAREHAM (Pages 19 - 34)

To consider a report of the Director of Culture, Communities and Business Services regarding St Francis Special School, Fareham.

NON-KEY DECISIONS

NONE

ABOUT THIS AGENDA:

On request, this agenda can be provided in alternative versions (such as large print, Braille or audio) and in alternative languages.

ABOUT THIS MEETING:

The press and public are welcome to attend the public sessions of the meeting. If you have any particular requirements, for example if you require wheelchair access, please contact members.services@hants.gov.uk for assistance.

County Councillors attending as appointed members of this Committee or by virtue of Standing Order 18.5; or with the concurrence of the Chairman in connection with their duties as members of the Council or as a local County Councillor qualify for travelling expenses.

HAMPSHIRE COUNTY COUNCIL

Decision Report

Decision Maker:	Executive Member for Education and Skills
Date:	10 July 2019
Title:	Austen Academy, Basingstoke
Report From:	Director of Culture, Communities and Business Services

Contact name: Steve Clow and Bob Wallbridge

Tel: 01962 847858
01962 847894

Email: steve.clow@hants.gov.uk
bob.wallbridge@hants.gov.uk

Purpose of this Report

1. The purpose of this report is to seek spend approval to the project proposals for Austen Academy.

Recommendation

2. That the Executive Member for Education and Skills, grants spend approval to the project proposals for Austen Academy at the total cost of £10,030,000.

Executive Summary

3. Austen Academy is a new special needs school that will cater for 125 children aged 5-16 years who have social and communication difficulties. The school is being procured and delivered by Hampshire County Council on behalf of the Department for Education (DfE) as part of the national Free Schools programme. The County Council has been commissioned by the DfE to oversee the design and delivery of a number of central government funded Free School projects through an arrangement referred to as "Local Delivery". This enables the County Council to retain a lead role in the planning and implementation of these schools and exercise control over key design decisions which will be of benefit to the pupils and staff who occupy these schools.
4. The school is required to meet the future demand for places for pupils with a social communication need or autistic spectrum disorder in this area of Hampshire. This facility will reduce the need to place pupils in non-county

establishments and avoid transport costs by providing the places close to the area of need. A planning application was submitted in May 2019 and the school is planned to open in Spring 2021.

5. The new school is to be located on land owned by the County Council at the site of the former Chineham Park Primary School in Basingstoke. The site will be leased to Catch 22 Academy Trust for 125 years, as required by the DfE.
6. The new school project is being funded by the DfE, and the estimated cost of the new school is £10,030,000. Once planning permission is obtained, a Works Funding Agreement and a Development Agreement will be entered into with the DfE confirming their formal approval. This will confirm their funding and granting authority to the County Council to let the construction contract.

Background

7. The project is included in the Children Services Capital Programme. This was approved at the Executive Lead Member for Children's Services Decision Day on 17 January 2019, which outlined the indicative available budget for the project.
8. The school was approved by the DfE following a successful bid by Hampshire County Council as part of the Free Schools national bidding round for special school provision. A free school sponsor was sought and following an application process and Catch 22 Academy Trust have been confirmed as the sponsor for the new school.
9. The County Council is working as a "local delivery" partner with the DfE to bring forward and implement this project. The design for the new school has been undertaken by the County Council's Property Services team in accordance with the DfE requirements. The design has subsequently been adopted by a contractor appointed through the DfE's contractor framework, with oversight and monitoring by the County Council's Property Services team. This would ensure the best possible control over the outcome for the school as the County Council as landlord.

Finance

10. Capital Expenditure:

The Capital Expenditure has already been approved in principle by the County Council, subject to the DfE's formal funding approval. The following table outlines the breakdown of its distribution across the project:

Capital Expenditure	Current Estimate £'000	Capital Programme £'000
Buildings	9,770	9,770
Fees	260	260
Total	10,030	10,030

11. Sources of Funding:

Financial Provision for Total Scheme	Buildings £'000	Fees £'000	Total Cost £'000
1. From Own Resources			
a) Capital Programme (as above)*	n/a	n/a	n/a
2. From Other Resources			
a) DfE Free School Grant	9,770**	260***	10,030
Total	9,770	260	10,030

*Not applicable, as DfE funded

** includes contractor design fees

*** DfE Project Delivery Grant to HCC Property Services

i. Building Cost:

Net Cost = £2,305 per m²

Gross Cost = £3,086 per m²

Cost Per Pupil Place = £80,000

ii. Furniture & Equipment:

Included in the above figures is an allocation of approximately £429,000 for the provision of all loose furniture, fittings, equipment and I.T. (inclusive of fees).

Details of Site and Existing Infrastructure

12. The new school will be located on the site of the former Chineham Park Primary School, Basingstoke. The site is accessed via Chineham Lane, off Shakespeare Road, Popley.
13. The school site is approximately 1.9 hectares and is owned by the County Council. The system building of the former primary school is located to the front of the site and this redundant structure is to be demolished as part of this project. The existing building was not suitable for adaption to a modern special school.
14. KIDS nursery, a privately run 76 place nursery is also located on the site, in the former Children's Centre building, which is to be retained. The nursery provides some places for young children with special educational needs and will remain in operation during the project.
15. The remainder of the site comprises the existing driveway, parking and former playing fields. A line of mature trees bounds the site to the south east corner, providing a degree of separation from the adjacent Basingstoke Ring Road and A33 Reading Road. To the north it is bounded by open public parkland, with residential areas to the west.
16. The existing services infrastructure will be upgraded to provide sufficient capacity for the new school.

Scope of the Project

17. The proposed project comprises the demolition of the existing building, the construction of the new school, external play areas, new parking and drop-off area and improvements to the access road.

The Proposed Building

18. The school building comprises:
 - 17 general teaching classrooms
 - 5 specialist and practical teaching classrooms.
 - Sensory, therapy and small group rooms
 - 2 learning resource rooms
 - Main hall
 - Dining hall and adjacent kitchen
 - Staff and administration rooms
 - Parent meeting room

- Pupil and staff toilets

19. The proposed school building is a rectangular compact form with the proposed accommodation arranged over two storeys. The larger double-height volumes of the hall and dining hall are located at one end. Classrooms for the younger pupils are located on the ground floor and classrooms for the older secondary-aged pupils are mostly located on the first floor.

20. The building is to be constructed of a steel frame and concrete floor construction with brick cladding, aluminium windows, doors and rooflights. The roof is constructed with a high-performance covering and parapet walls in brick to match that of the external wall cladding.

External Works

21. The external works comprise:

- Separate hard-paved play and social areas for primary and secondary aged pupils
- Grassed play areas, including a sports pitch
- A multi-use games court
- An outdoor dining area
- A habitat area
- Therapy activity areas
- Soft landscaping
- A covered cycle parking stand for staff
- A car park for staff and visitors including accessible spaces
- A drop-off area, shared with the existing nursery
- Widening of the existing access road

22. Parking is provided in accordance with Hampshire County Council's parking requirements as follows:

- 48 standard and 3 accessible parking bays
- 15 parking bays allocated to the existing nursery
- 2 mini-bus and 2 motor bike parking bays

Planning

23. A planning application was submitted in May 2019 and the school is planned to open in Spring 2021.

Construction Management

24. The part of the site where KIDS nursery is located will remain in use during the construction period and local management arrangements will be put in place to manage the health and safety impact for all nursery users. It is proposed that the contractor will access the school site via the existing shared access road.
25. No deliveries or construction vehicle movements will take place at the start or end of the nursery day, in order to avoid traffic conflict when pupils are arriving at or departing from the nursery.
26. It is anticipated that works will commence on site at the end of 2019 and complete early 2021, with the school opening in Spring 2021.

Building Management

27. Under the proposed lease the Catch 22 Academy Trust will be responsible for the repair, maintenance and insurance responsibilities for the school site and building.

Professional Resources

28. The County Council's Property Services team have undertaken a strategic planning role to direct and oversee the early stages of the development of this project to date.
29. In addition, the DfE have appointed Hampshire County Council's Property Services as technical advisor and project manager to oversee the procurement and implementation of the project.
30. The County Council have appointed Interserve Construction Ltd for pre-construction services through the DfE Contractors' Framework, in accordance with the DfE and on a Design and Build basis. Interserve Construction Ltd have their own consultant team who have developed the design for the planning application and construction as directed by the County Council's Property Services team.

Consultation and Equalities

31. A pre-planning consultation took place between the 7th January and 4th February 2019 with a drop-in session held on 23 January for consultees to meet with the project team and school to discuss the project. The responses received were positive and welcomed the proposed development of the site and that special school places were to be provided.
32. Equality impacts have been identified in the Equality Statement in integral Appendix B.
33. The following have been consulted during the development of this project. Refer also Appendix A:

Department for Education (DfE)
Catch 22 Academy Trust
Hampshire County Council - Children's Services
Executive Lead Member for Children's Services
Local County Councillor
Basingstoke and Deane Borough Council Local Members
Local Residents
'Kids' Nursery (existing nursery)
Fire Officer
Access Officer
Hampshire County Council Planning Officer

Risk & Impact Issues

34. Fire Risk Assessment

Austen Academy has been commissioned by the DfE, who do not require sprinklers to be fitted as a standard requirement, and on completion the building will be the responsibility of Catch 22 Academy Trust. As such it is therefore not subject to Hampshire County Council's fire sprinkler risk assessment.

The appointed Design and Build contractor has selected to design the building, in respect to fire safety design and management, in accordance with BS 9999-2017. Using this British Standard, the contractor has determined that sprinklers are not required to meet the statutory requirements of the Building Regulations and achieve compliance with Approved Document Part B and the DfE's Services Output Specification.

The building does not include the use of any aluminium composite materials.

Health and Safety

35. Design risk assessments, pre-construction health & safety information and a Health & Safety File will be produced in accordance with the Construction Design and Management Regulations for the proposed scheme.

Climate Change

36. The project will incorporate the following features to reduce energy consumption and mitigate the impact of climate change:
- A highly insulated building envelope including high performance windows, doors and rooflights.
 - Provision of good levels of day lighting to teaching areas to reduce the need for artificial lighting and energy use.
 - Energy efficient lighting and heating controls
 - Natural ventilation with heat recovery to teaching spaces with a night-time cooling strategy.
 - The use of timber from sustainable sources.
 - A site waste management plan to ensure the principles of minimising waste are maintained during construction

Crime Prevention Issues

37. The County Council has a legal obligation under Section 17 of the Crime and Disorder Act 1998 to consider the impact of all the decisions it makes on the prevention of crime and disorder in the County. The proposals in this report have no impact on the prevention of crime.

REQUIRED CORPORATE AND LEGAL INFORMATION:

Links to the Strategic Plan

Hampshire maintains strong and sustainable economic growth and prosperity:	yes
People in Hampshire live safe, healthy and independent lives:	yes
People in Hampshire enjoy a rich and diverse environment:	yes
People in Hampshire enjoy being part of strong, inclusive communities:	yes

Other Significant Links

Links to previous Member decisions:	
<u>Title</u> Childrens Services Capital Programme, Executive Lead Member for Children’s Services Decision Day	<u>Date</u> 17 January 2019

Section 100 D - Local Government Act 1972 - background documents	
<p>The following documents discuss facts or matters on which this report, or an important part of it, is based and have been relied upon to a material extent in the preparation of this report. (NB: the list excludes published works and any documents which disclose exempt or confidential information as defined in the Act.)</p>	
<u>Document</u>	<u>Location</u>
None	

EQUALITIES IMPACT ASSESSMENT:

1. Equality Duty

The County Council has a duty under Section 149 of the Equality Act 2010 ('the Act') to have due regard in the exercise of its functions to the need to:

- Eliminate discrimination, harassment and victimisation and any other conduct prohibited by or under the Act with regard to the protected characteristics as set out in section 4 of the Act (age, disability, gender reassignment, marriage and civil partnership, pregnancy and maternity, race, religion or belief, sex and sexual orientation);
- Advance equality of opportunity between persons who share a relevant protected characteristic within section 149(7) of the Act (age, disability, gender reassignment, pregnancy and maternity, race, religion or belief, sex and sexual orientation) and those who do not share it;
- Foster good relations between persons who share a relevant protected characteristic within section 149(7) of the Act (see above) and persons who do not share it.

Due regard in this context involves having due regard in particular to:

- The need to remove or minimise disadvantages suffered by persons sharing a relevant protected characteristic that are connected to that characteristic;
- Take steps to meet the needs of persons sharing a relevant protected characteristic that are different from the needs of persons who do not share it;
- Encourage persons sharing a relevant protected characteristic to participate in public life or in any other activity in which participation by such persons is disproportionately low.

2. Equalities Impact Assessment:

Please see below in Appendix B

FEEDBACK FROM CONSULTEES:**OTHER EXECUTIVE MEMBERS:**

Executive Member & Portfolio	Reason for Consultation	Date Consulted	Response:
Councillor Patricia Stallard, Executive Lead Member for Children's Services and Young People	Portfolio Holder		

OTHER FORMAL CONSULTEES:

Member/ Councillor	Reason for Consultation	Date Consulted	Response:
Councillor Jane Frankum	Consulted prior to Pre planning public consultation.	10 August 2018.	

Equality Impact Assessment



Hampshire
County Council

Austen Academy

Accountable officer: Glenn Parkinson

Email address: strategicplanningunit@hants.gov.uk

Department: Children's Services

Date of assessment: 06/06/2019

Description of current service/policy

Austen Academy is a new special needs school that will cater for 125 children aged 5-16 years who have social and communication difficulties. The school is being procured and delivered by Hampshire County Council on behalf of the Department for Education (DfE) as part of the national Free Schools programme.

Geographical impact: Basingstoke &
Deane

Description of proposed change

The school is required to meet the future demand for places for pupils with a social communication need/autistic spectrum disorder in this area of Hampshire. This facility will reduce the need to place pupils in non-county establishments and avoid transport costs by providing the places close to the area of need. A planning application was submitted in May 2019 and the school is planned to open in Spring 2021.

Impacts of the proposed change

This impact assessment covers Service users

Engagement and consultation

Has engagement or consultation been carried out? Yes

Pre-planning consultation took place between 7 January and 4th February 2019 with relevant consultees including:

Neighbouring schools and governors

Children's Services

Local County Councillor

Local District Councillors

Local Residents

Local Member of Parliament

Local Dioceses

Trade Union Representatives

Comments received were considered as part of the pre-planning process prior to the submission of the planning application.

Statutory considerations	Impact	Mitigation
Age: Positive	Austen Academy will allow more opportunities for 5-16 years who have social and communication difficulties to gain a place at a local special school.	
Disability: Positive	Austen Academy will allow more opportunities for 5-16 years who have social and communication difficulties to gain a place at a local special school.	
Sexual orientation: Neutral		
Race: Neutral		
Religion and belief: Neutral		

Gender reassignment: Neutral		
Gender: Neutral		
Marriage and civil partnership: Neutral		
Pregnancy and maternity: Neutral		
Other policy considerations	Impact	Mitigation
Poverty: Neutral		
Rurality: Neutral		

Neutrality statement (if all considerations have a neutral impact)

Any other information

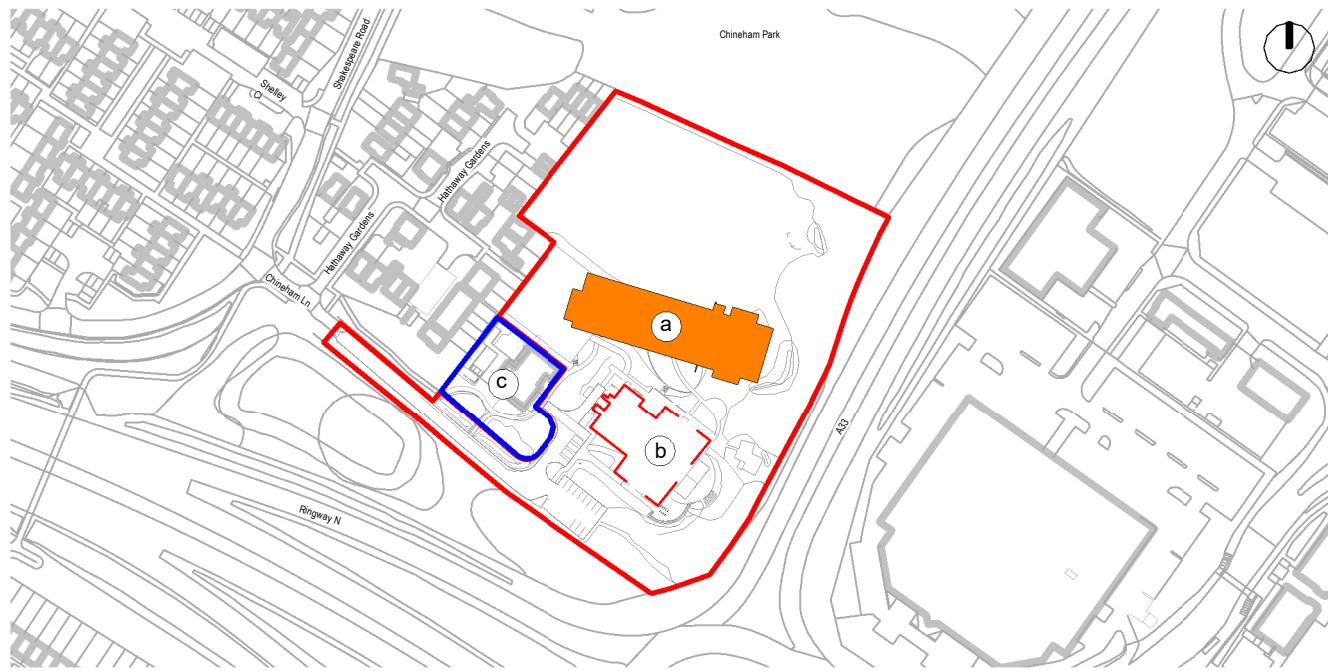
**Austen Academy
Basingstoke
Demolition of existing building and
provision of a new All-Through
Special Needs school**

Key:

- a New Austen Academy
- b Existing Building to be demolished
- c KIDS Nursery

- 1 Cycle shelter and bin store
- 2 Existing nursery car park - enlarged and resurfaced
- 3 Proposed car park
- 4 Drop-off and pick-up area
- 5 Stepped and ramped school main entrance
- 6 Secondary entrance for primary pupils
- 7 Primary outdoor play
- 8 Primary classroom spaces
- 9 Outdoor dining
- 10 Garden area
- 11 MUGA
- 12 Soft Play
- 13 Sports Pitch
- 14 Primary Classrooms
- 15 Staff Room
- 16 Admin & Staff
- 17 Dining & Hall
- 18 Kitchen
- 19 Plant
- 20 Secondary Classrooms
- 21 Specialist Classrooms

- Site Boundary
- Other Land owned by the applicant
Existing Nursery
- Existing building to be demolished
- Proposed Building
- ▶ Pedestrian Access
- ▶ Vehicular Access
- Teaching - New build
- Non-teaching - New build
- Circulation



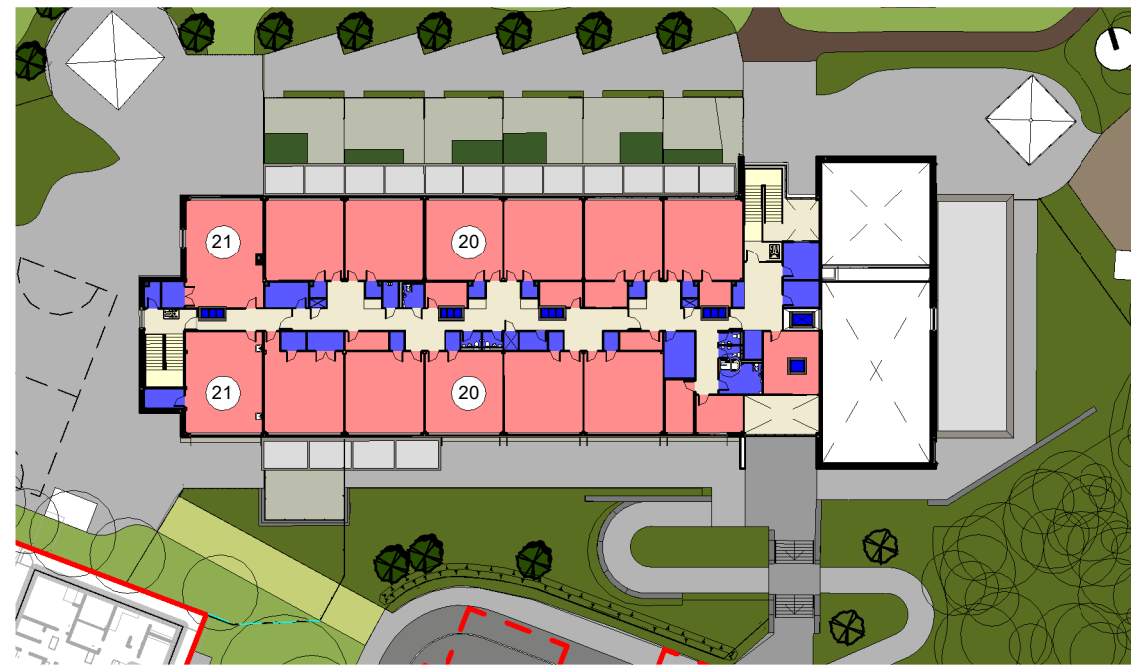
Existing Location Plan



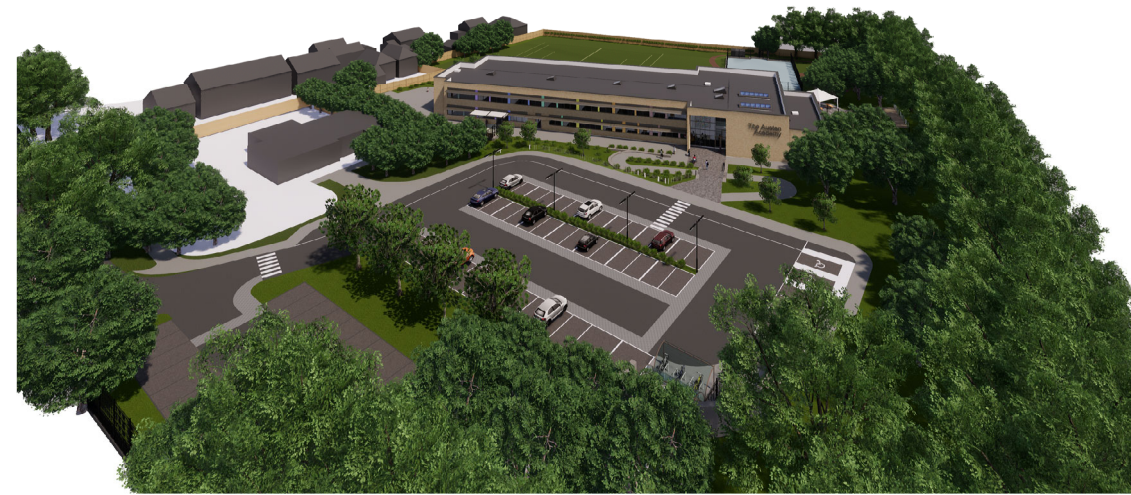
Proposed Ground Floor Plan



Proposed Site Plan



Proposed First Floor Plan



Aerial View Looking North

Project Appraisal

Not to Scale
P11600 - SK100_Rev A

Project Appraisal

Not to Scale
P11600 - SK100_Rev A

March 2019

This page is intentionally left blank

HAMPSHIRE COUNTY COUNCIL

Decision Report

Decision Maker:	Executive Member for Education and Skills
Date:	10 July 2019
Title:	St Francis Special School, Fareham
Report From:	Director of Culture, Communities and Business Services

Contact names: Steve Clow and Bob Wallbridge

Tel: 01962 847858
01962 847894

Email: steve.clow@hants.gov.uk
bob.wallbridge@hants.gov.uk

Purpose of this Report

- 1 The purpose of this report is to seek spend approval to the project proposals at St Francis Special School.

Recommendations

- 2 That the Executive Member for Education and Skills, grants spend approval to the project proposals for St Francis Special School at the total cost of £4,394,000.

Executive Summary

- 3 St Francis Special School provides education for children aged between 2 and 19 years old with severe learning difficulties or profound and multiple learning difficulties. Built in 1977 to accommodate pupils with moderate learning difficulties, the existing classrooms are undersized and require improvements to better meet the increasingly complex needs of the pupils that now attend the school.
- 4 This project addresses these shortcomings through providing four new classrooms, ancillary teaching spaces and hygiene facilities, together with internal alterations and external access improvements.
- 5 The project is included in the Children's Services Capital Programme, approved at the Executive Lead Member for Children's Services Decision Day on 17 January 2019, with a budget of £4,394,000.
- 6 A Planning application has been submitted and a decision is anticipated in July 2019.

Background

- 7 St Francis Special School provides education for children aged between 2 and 19 years old with severe learning difficulties or profound and multiple learning difficulties. There are currently 93 pupils on roll.
- 8 The project is included in the Children's Services Capital Programme, approved at the Executive Lead Member for Children's Services Decision Day on 17 January 2019, which outlines the available budget for the project.
- 9 Providing four new classrooms, the works are required to address shortcomings in the existing accommodation due to the increasingly complex needs of the pupils. Many of the existing classrooms are undersized and require improvements to better meet the educational needs of the pupils that now attend the school. The proposals also provide improved accessibility, additional ancillary teaching spaces and hygiene facilities.
- 10 The numbers attending the school are not currently planned to increase as a result of these proposals.

Finance

11 Capital Expenditure:

The Capital Expenditure has already been approved in principle; the following tables outline the breakdown of its distribution across the project:

Capital Expenditure	Current Estimate £'000	Capital Programme £'000
Buildings	3,772	3,772
Fees	622	622
Total	4,394	4,394

12 Sources of Funding:

Financial Provision for Total Scheme	Buildings £'000	Fees £'000	Total Cost £'000
1. From Own Resources			
a) Capital Programme (as above)	3,772	622	4,394
Total	3,772	622	4,394

Main School Works

Building Cost:

Net Cost = £3,446 per m² (New Build Only)

Gross Cost = £2,272 per m²

Cost Per Pupil Place - n/a no additional pupils

Post 16 Unit

Building Cost:

Net Cost = £3,781 per m²

Gross Cost = £2,559 per m²

Cost Per Pupil Place - n/a no additional pupils

i. Furniture & Equipment:

Included in the above figures is an allocation of approximately £73,755 for the provision of all loose furniture, fittings, equipment and I.T. (inclusive of fees).

ii. School Balances:

The school has the following level of balances:

Published revenue balance as at 31 March 2019: £259,781.09

Devolved capital as at 31 March 2019: £32,744.39

Revenue Issues:

iii. Overview of Revenue Implications:

	(a) Employees £'000	(b) Other £'000	(a+b) *Net Current Expenditure £'000	(c) Capital Charges £'000	(a + b + c) Total Net Expenditure £'000
Revenue Implications Additional + / Reductions	0	0	0	242	242

Details of Site and Existing Infrastructure

- 13 St Francis Special school is located off Patchway Drive, adjacent to the A27, in Fareham. It is federated with the adjacent Heathfield Special School which provides education for primary pupils with moderate or severe learning difficulties.

- 14 The school was built in 1977 to accommodate pupils with moderate learning difficulties. It is constructed of load-bearing brick and blockwork under a predominantly mono-pitched tiled roof. Extensions were added in 1999, 2002 and 2014 using complementary materials.
- 15 The existing services infrastructure and access to the site is sufficient to accommodate the project proposals.

Scope of the Project

- 16 The proposed project comprises a four-classroom extension, internal alterations to existing school spaces and improvements to external learning areas and access arrangements.

The Proposed Building

- 17 The proposed replacement classrooms and alterations comprise:
 - Four new classrooms, with associated hygiene rooms and toilets
 - An extension to the main circulation with a small library area
 - Refurbishment of five existing class spaces to become specialist learning spaces and ancillary staff and welfare facilities
 - Major refurbishment of the central circulation space, including a new ramp to improve access
 - A new hygiene room and toilets in the Post-16 building.
- 18 The proposed extension will be of framed construction, finished externally in brick to match the existing, with aluminium windows and doors. The roof will be a mono-pitched, metal roof with the adjoining roof finished with a high performance covering. A timber canopy will be constructed to provide a covered external area to the new extension.

External Works

- 19 The external works comprise:
 - Improvements to pupil play areas, including new surfacing and access ramps
 - Additional fencing to improve safeguarding
 - A replacement covered external ramp to the existing Post-16 building
 - Improvements to staff parking and pupil drop off areas

Planning

- 20 A planning application for these works was submitted in May 2019 with determination anticipated later in summer 2019.

Construction Management

- 21 The school site will remain in use during the construction period and local management arrangements will be put in place to manage the health and safety impact for all school users. Contractors working areas will be segregated from the school users.
- 20 No deliveries or construction vehicle movements will take place at the start or end of the school day, in order to avoid traffic conflict when pupils are arriving at or departing from the school.
- 21 It is proposed that an enabling works contract is carried out during the summer of 2019 to complete the internal alterations to the Post-16 teaching unit.
- 22 Following the enabling works contract, the main works will be procured through the Intermediate Construction Framework and are anticipated to commence during late 2019 and complete during late 2020. The refurbishment to the central circulation space will take place during holiday periods to minimise any disruption to the pupils and staff in the school.

Building Management

- 25 The existing building management arrangements will remain in place.

Professional Resources

Architecture -	Culture, Communities & Business Services
Landscape Architecture -	Culture, Communities & Business Services
Interior Design -	Culture, Communities & Business Services
Mechanical & Electrical -	Culture, Communities & Business Services
Structural Engineering -	Culture, Communities & Business Services
Cost Management -	Culture, Communities & Business Services
Principal Designer -	Culture, Communities & Business Services
Drainage Engineering -	Economy, Transport and Environment

Consultation and Equalities

- 26 A statutory Principle of Enlargement consultation is not required for this project as there is no increase of numbers attending the school is currently planned. However, parents, governors and local residents were invited to an informal drop-in at the school held on 12 March 2019 to review and contribute to the plans. Parents and governors were also included in a site strategy workshop held at the school.
- 27 The following have been consulted during the development of this project. Refer also to Appendix A.

Headteacher
School Governors
Children's Services
Executive Lead Member for Children's Services
Local County Councillor
Local Residents
Fire Officer
Access Officer
Planning Department

Risk & Impact Issues

Fire Risk Assessment

- 28 With respect to fire safety and property protection, the proposals have been risk assessed in line with the agreed Property Services procedures and confirmed that the provision of sprinklers is not required in this instance.
- 29 The proposals will meet the requirements of the Building Regulations (BB100 Fire Safety in Schools), including enhancements beyond minimum provision, and are consistent with current fire safety legislation, the partnership arrangement with Hampshire Fire and Rescue Services, and are in line with the County Council's policy to manage corporate risk.
- 30 The project proposals include the following fire safety features:
- Extension of the existing fire alarm system
 - External finishes specified as fire resistant.

Health and Safety

- 31 Design risk assessments, pre-construction health & safety information and a Health & Safety File will be produced in accordance with the Construction Design and Management Regulations for the proposed scheme.

Climate Change:

- 32 The project will incorporate the following features to reduce energy consumption and mitigate the impact of climate change:
- A highly insulated building envelope for the extension including high performance windows, doors and rooflights
 - Provision of good levels of day lighting to all teaching areas to reduce the need for artificial lighting and energy use.
 - Energy efficient lighting and heating controls
 - Extended roof canopies over large glazed areas to avoid summer-time overheating.

- The use of timber from sustainable sources
- A site waste management plan to ensure the principles of minimising waste are maintained during construction

REQUIRED CORPORATE AND LEGAL INFORMATION:

Links to the Strategic Plan

Hampshire maintains strong and sustainable economic growth and prosperity:	yes
People in Hampshire live safe, healthy and independent lives:	yes
People in Hampshire enjoy a rich and diverse environment:	yes
People in Hampshire enjoy being part of strong, inclusive communities:	yes

Section 100 D - Local Government Act 1972 - background documents	
<p>The following documents discuss facts or matters on which this report, or an important part of it, is based and have been relied upon to a material extent in the preparation of this report. (NB: the list excludes published works and any documents which disclose exempt or confidential information as defined in the Act.)</p>	
<u>Document</u>	<u>Location</u>
None	

EQUALITIES IMPACT ASSESSMENT:

1. Equality Duty

The County Council has a duty under Section 149 of the Equality Act 2010 ('the Act') to have due regard in the exercise of its functions to the need to:

- Eliminate discrimination, harassment and victimisation and any other conduct prohibited by or under the Act with regard to the protected characteristics as set out in section 4 of the Act (age, disability, gender reassignment, marriage and civil partnership, pregnancy and maternity, race, religion or belief, sex and sexual orientation);
- Advance equality of opportunity between persons who share a relevant protected characteristic within section 149(7) of the Act (age, disability, gender reassignment, pregnancy and maternity, race, religion or belief, sex and sexual orientation) and those who do not share it;
- Foster good relations between persons who share a relevant protected characteristic within section 149(7) of the Act (see above) and persons who do not share it.

Due regard in this context involves having due regard in particular to:

- The need to remove or minimise disadvantages suffered by persons sharing a relevant protected characteristic that are connected to that characteristic;
- Take steps to meet the needs of persons sharing a relevant protected characteristic that are different from the needs of persons who do not share it;
- Encourage persons sharing a relevant protected characteristic to participate in public life or in any other activity in which participation by such persons is disproportionately low.

2. Equalities Impact Assessment:

Please see below in Appendix B

FEEDBACK FROM CONSULTEES:**OTHER EXECUTIVE MEMBERS:**

Executive Member & Portfolio	Reason for Consultation	Date Consulted	Response:
Councillor Patricia Stallard, Executive Lead Member for Children's Services and Young People	Portfolio Holder		

OTHER FORMAL CONSULTEES:

Member/ Councillor	Reason for Consultation	Date Consulted	Response:
Councillor Hockley	Local Member for Fareham Titchfield	03/12/18 01/03/19 20/03/19	Cllr Hockley attended the pre-planning consultation drop-in on 20 March 2019.

Equality Impact Assessment



Hampshire
County Council

Improvements to St Francis Special School

Accountable officer: Claire Campling

Email address: strategicplanningunit@hants.gov.uk

Department: Children's Services

Date of assessment: 11/06/2019

Description of current service/policy

St Francis Special School provides education for children aged between 2 and 19 years old with severe learning difficulties or profound and multiple learning difficulties. There are currently 93 pupils on roll.

Hampshire County Council is committed to ensuring that schools provide a quality and accessible learning environment for all pupils – St Francis Special School is in need of significant improvements to better meet the needs of the pupils that now attend the school.

Geographical impact: Fareham, Gosport

Description of proposed change

The County Council is proposing to remodel and refurbish parts of the main school and the Post 16 unit to improve accessibility and provide additional ancillary teaching spaces and hygiene facilities. Four new classrooms will be provided. This project will not increase the number of pupils the school can admit but will significantly improve facilities for the pupils already attending the school.

Impacts of the proposed change

This impact assessment covers Service users

Engagement and consultation

Has engagement or consultation been carried out?

Yes

A non-statutory consultation took place between 28 February and 28 March 2019. A drop-in event where stakeholders were able to discuss the proposal with Hampshire County Council officers was held on the 12 March 2019 between 3pm and 6pm at St Francis School, Fareham. Letters were sent to the following stakeholders:

Headteacher

School Governors

Local Member and District Councillors

Local Residents

Two comments were received, both supportive.

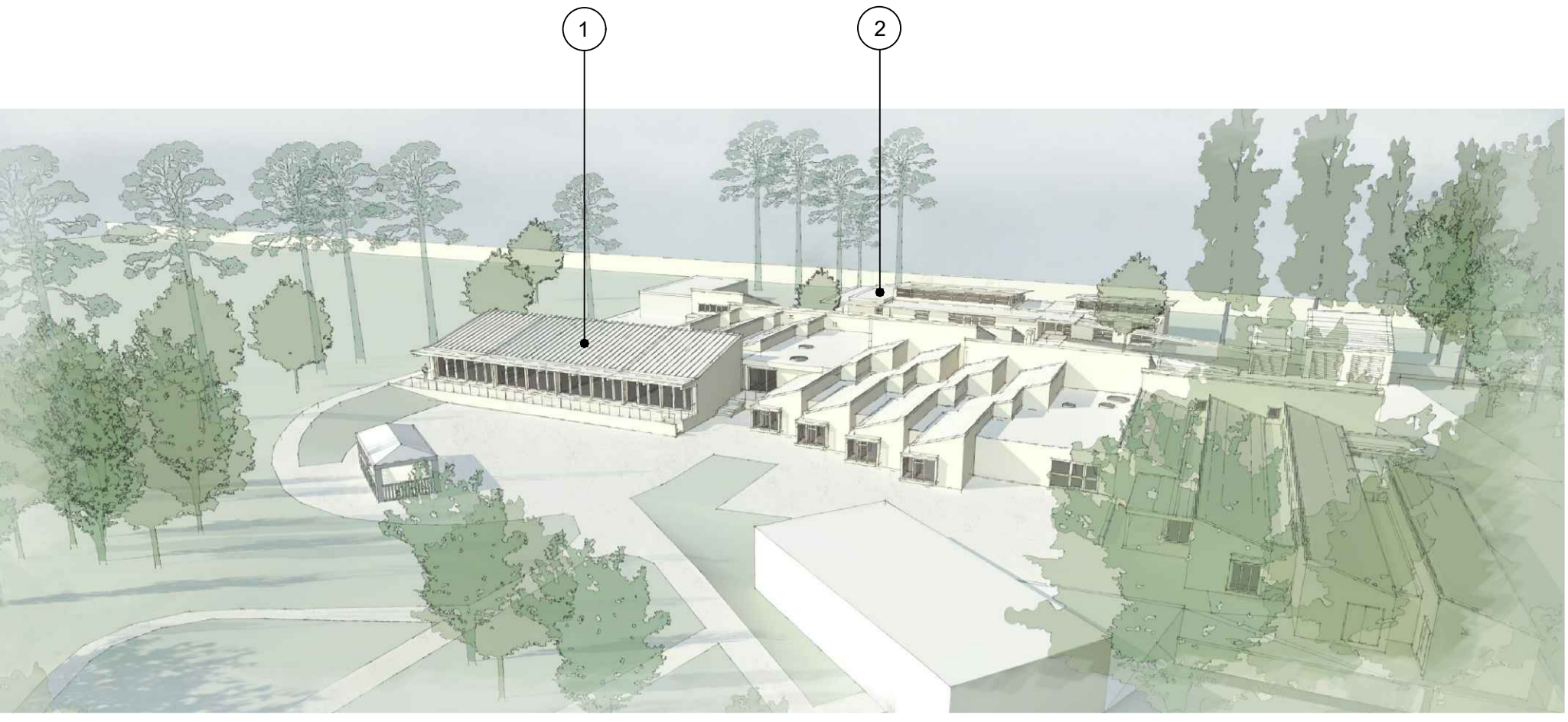
Statutory considerations	Impact	Mitigation
Age: Neutral		
Disability: Positive	By providing four new classrooms, appropriate hygiene spaces and improving ancillary facilities and access at St Francis Special School will provide the 2-19 year old pupils with severe learning difficulties and complex needs with a more suitable learning environment tailored to their needs.	
Sexual orientation: Neutral		
Race: Neutral		
Religion and belief: Neutral		

Gender reassignment: Neutral		
Gender: Neutral		
Marriage and civil partnership: Neutral		
Pregnancy and maternity: Neutral		
Other policy considerations	Impact	Mitigation
Poverty: Neutral		
Rurality: Neutral		

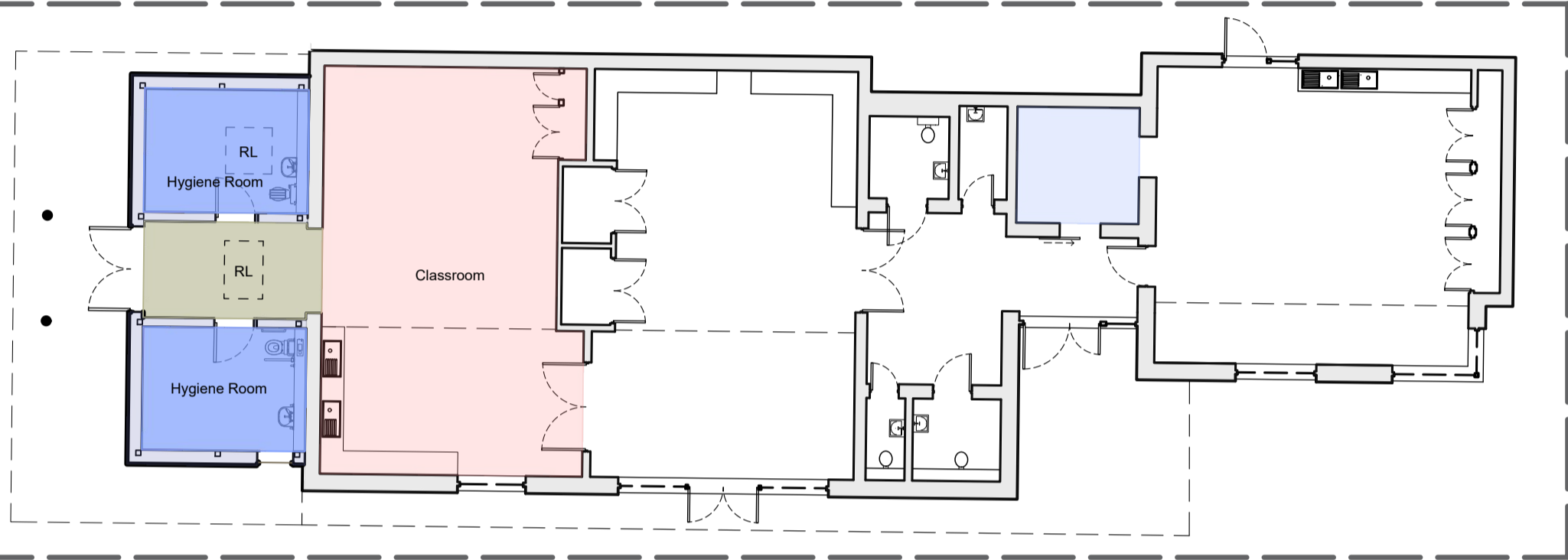
Neutrality statement (if all considerations have a neutral impact)

Any other information

This page is intentionally left blank



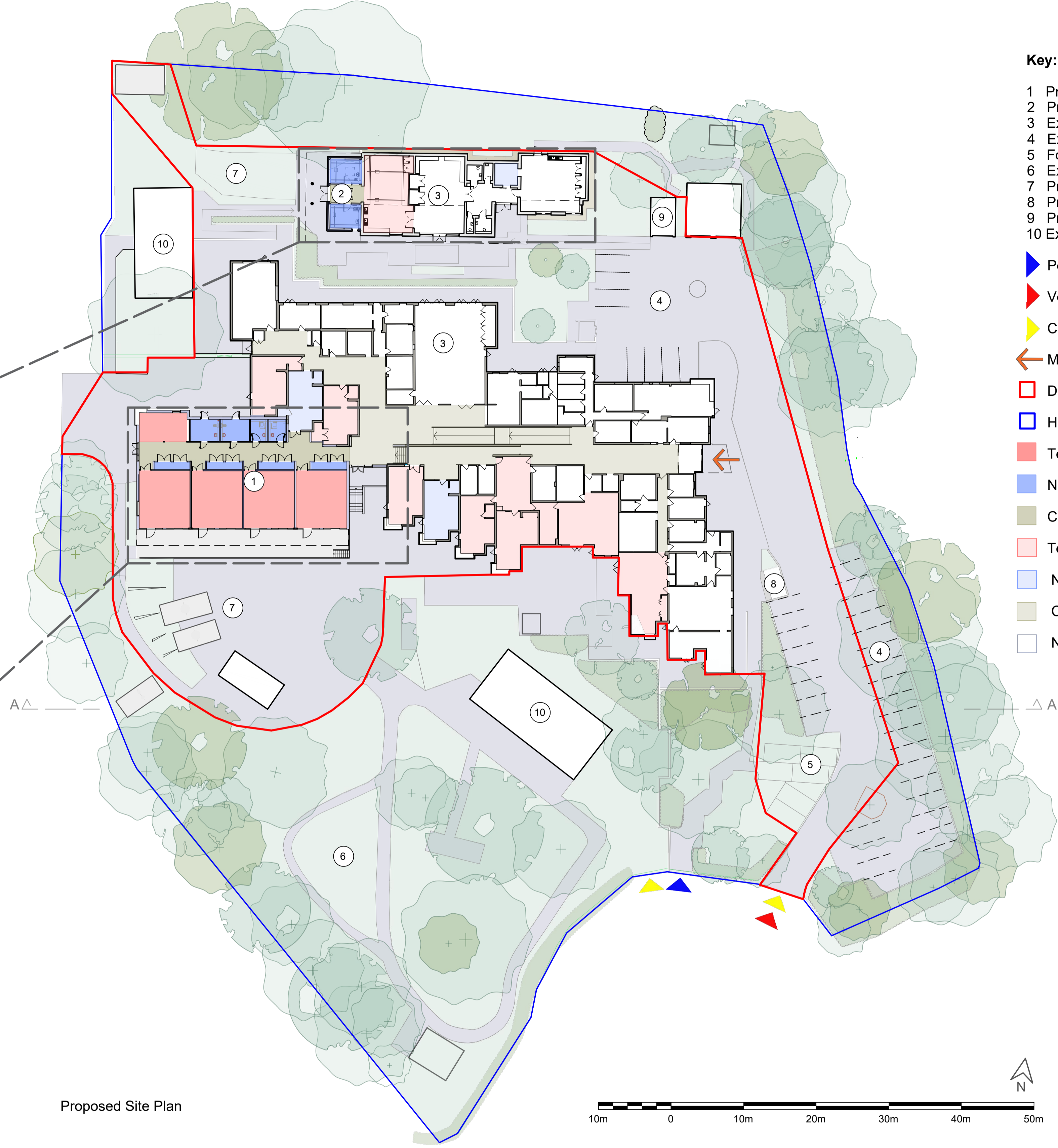
3D view of proposed scheme



Proposed Extension Post 16 Unit Plan

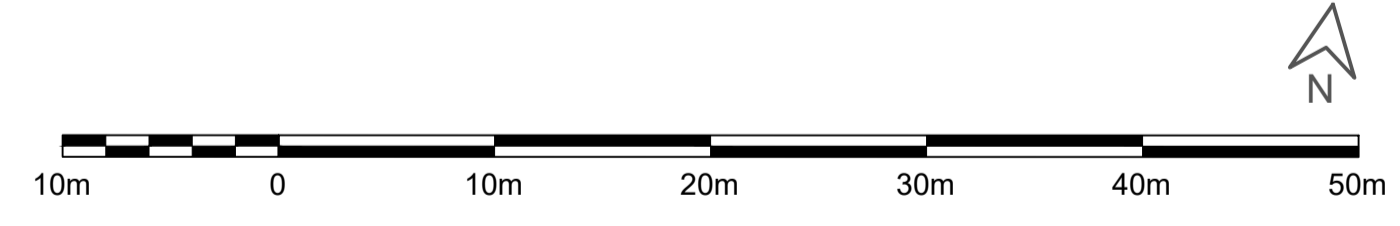


Proposed Extension Main Building Plan



Proposed Site Plan

- Key:**
- 1 Proposed Main Building 4 Classroom Extension
 - 2 Proposed Post 16 Unit Extension
 - 3 Existing Special School
 - 4 Existing Car Park
 - 5 Formalised Car Park Spaces
 - 6 Existing Landscape/ Playground
 - 7 Proposed Landscape/ Playground
 - 8 Proposed Cycle Store
 - 9 Proposed Conversion of Garage into Shelter.
 - 10 Existing Temporary Classroom
- Pedestrian Access
 - Vehicular Access
 - Contractor Access
 - Main Entrance
 - Development Boundary
 - HCC Site Boundary
 - Teaching - New Build
 - Non Teaching - New Build
 - Circulation - New Build
 - Teaching - Refurbishment
 - Non Teaching - Refurbishment
 - Circulation - Refurbishment
 - Not Affected



Proposed Elevation AA

cad file name: \\PBR-CAD.IT2000.HANTS.GOV.UK\CAD2\CHILDRENS SERV\PQRS\ST FRANCIS SPECIAL 7033\12077 EXTENSION\01 WIP\AUTOCAD\1000 LOCATION\12077-A-1010 PROJECT APPRAISAL.DWG

General Notes

- This drawing is © copyright Hampshire County Council 2018. No unauthorised reproduction of any kind is permitted.
- No dimensions to be scaled from this drawing. Verify all dimensions prior to construction. Immediately report any discrepancies on the document to the Architect/Contract Administrator. This document shall be read in conjunction with associated models, specifications and related consultant's documents.
- Drawing to be read with all relevant Architectural, Interiors, Structural, M&E, Drainage/Public Health, Landscape, Civils and Interiors drawings and specifications.
- This map is reproduced from Ordnance Survey material with the permission of Ordnance Survey on behalf of the controller of Her Majesty's Stationary Office © Crown copyright. Unauthorised reproduction infringes Crown Copyright & may lead to prosecution or civil proceedings (100019180) 2018.

Rev	Description	Date	By	Chkd
P1	Project Appraisal	24/05/19	TL	MD

HCC Property Services,
Three Minsters House,
78 High Street, Winchester SO23 8UL
tel: (01962) 647801

PROJECT NAME
St Francis Special School, Fareham PO14 3BN

SHEET NAME
Project Appraisal

SCALE
NTS

DRAWING No.
P12077-HCC-A-1010

DRAWN TL
CHKD MD
APRV XXX

SCALE NTS
DRAWN TL
CHKD MD
APRV XXX

SCALE NTS
DRAWN TL
CHKD MD
APRV XXX

SCALE NTS
DRAWN TL
CHKD MD
APRV XXX

code description

This page is intentionally left blank